



PASSION FOR PRECISION



COMPANY Profile



Precision Opencast Mining Services (Pty) Ltd (POMS), founded in July 2003 in Middelburg, Mpumalanga, has established itself as a prominent leader in the opencast mining sector. Leveraging innovative solutions and extensive industry expertise, we are recognized for delivering excellence and reliability.

At POMS, we are dedicated to being the preferred provider of cutting-edge, high-quality solutions across all activities, products, services, and facilities under our control or influence. Our commitment prioritizes mitigating health and safety risks associated with opencast mining operations.

We strive to conduct our operations with the highest standards of excellence, ensuring that all business activities align with our unwavering focus on health, safety, and environmental management.

The company operates a large fleet of machinery and when required, it is able to complement its existing fleet to meet the specific requirements of any project.

OUR CAPABILITIES

- ❑ Contract mining services including mine development
- ❑ Opencast mine planning and costing
- ❑ Drilling & blasting
- ❑ Loading and hauling
- ❑ Opencast rehabilitation
- ❑ Overburden removal
- ❑ Infrastructure [Dams, roads, etc]
- ❑ Project management
- ❑ Dewatering
- ❑ Survey services



EXCO Team



Eugene Pretorius (Snr)

**Group
Chairman**



Allan Bullock

**Chief Executive
Officer (CEO)**

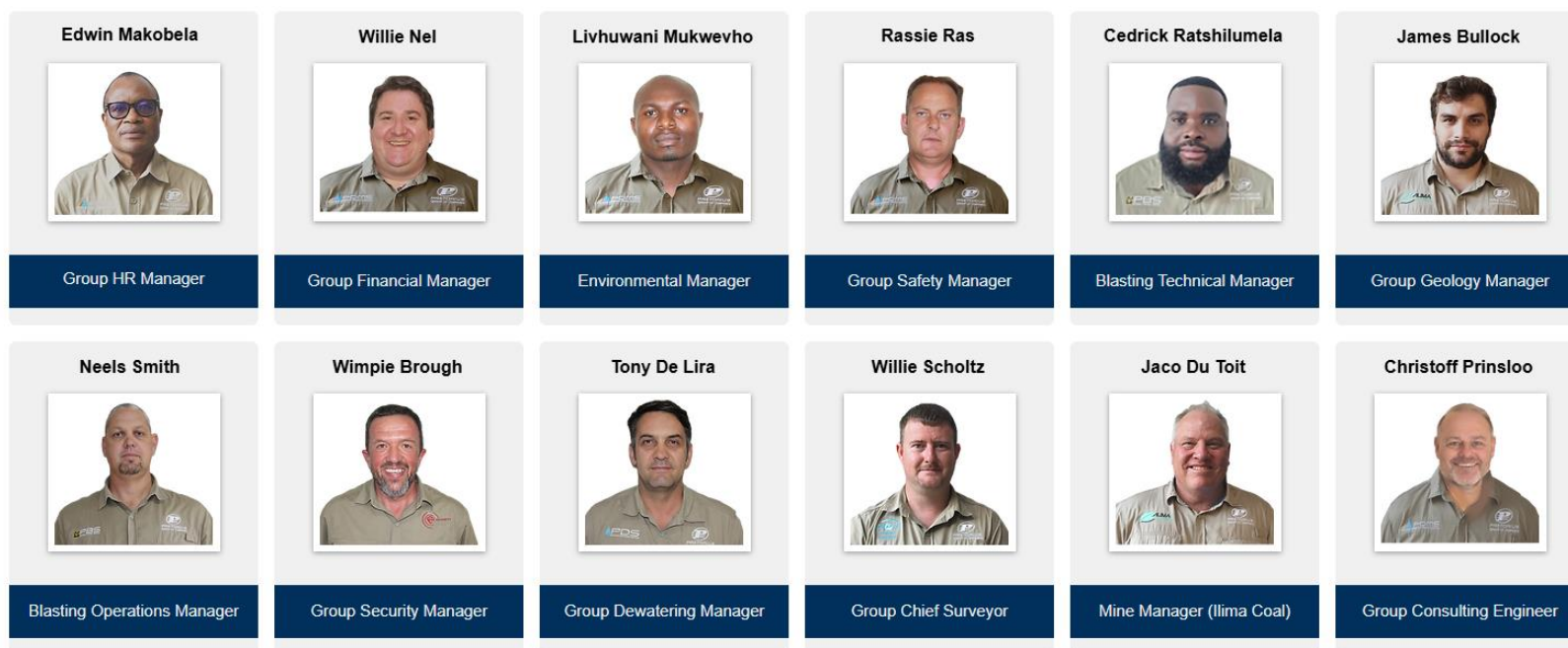
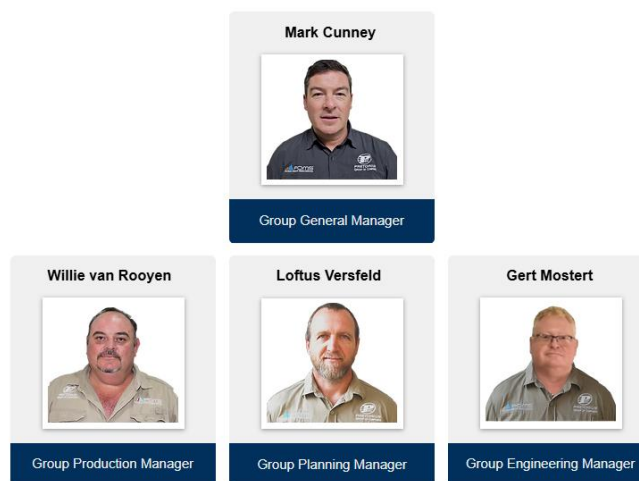


Eugene Pretorius (Jnr)

**Chief Operations
Officer (COO)**

**"We are fully committed to
efficient, zero-harm production"**





OUR MISSION Statement



OUR MISSION STATEMENT

To consistently deliver safe and innovative operations and ensure profitable outcomes for our business, clients and our people.



OUR VISION STATEMENT

Our vision is to lead the industry in delivering specialised mining services, leveraging our extensive experience and consistently surpassing client expectations with seamless, professional solutions.



OUR VALUES

Precision - Collaboration - Respect - Integrity - Empowerment



PRECISION

- Our reputation is built on the quality of the services we provide and the level to which we value the safety and well-being of our people. We continuously strive to better ourselves and our business. We recognise and embrace every opportunity to improve and only accept performance of the highest standard.



COLLABORATION

- We succeed because we recognise and implement concepts from all levels of the business. Our strength comes from the talents and expertise of our people. We work to secure the best outcomes by cooperating with all stakeholders and drawing from our collective knowledge and experience.



RESPECT

- We acknowledge and appreciate the thoughts, opinions and feelings of all people. We treat others with courtesy, equality and fairness, and appreciate every contribution. We recognise each other's worth and understand that our social and cultural differences make us better as whole.



INTEGRITY

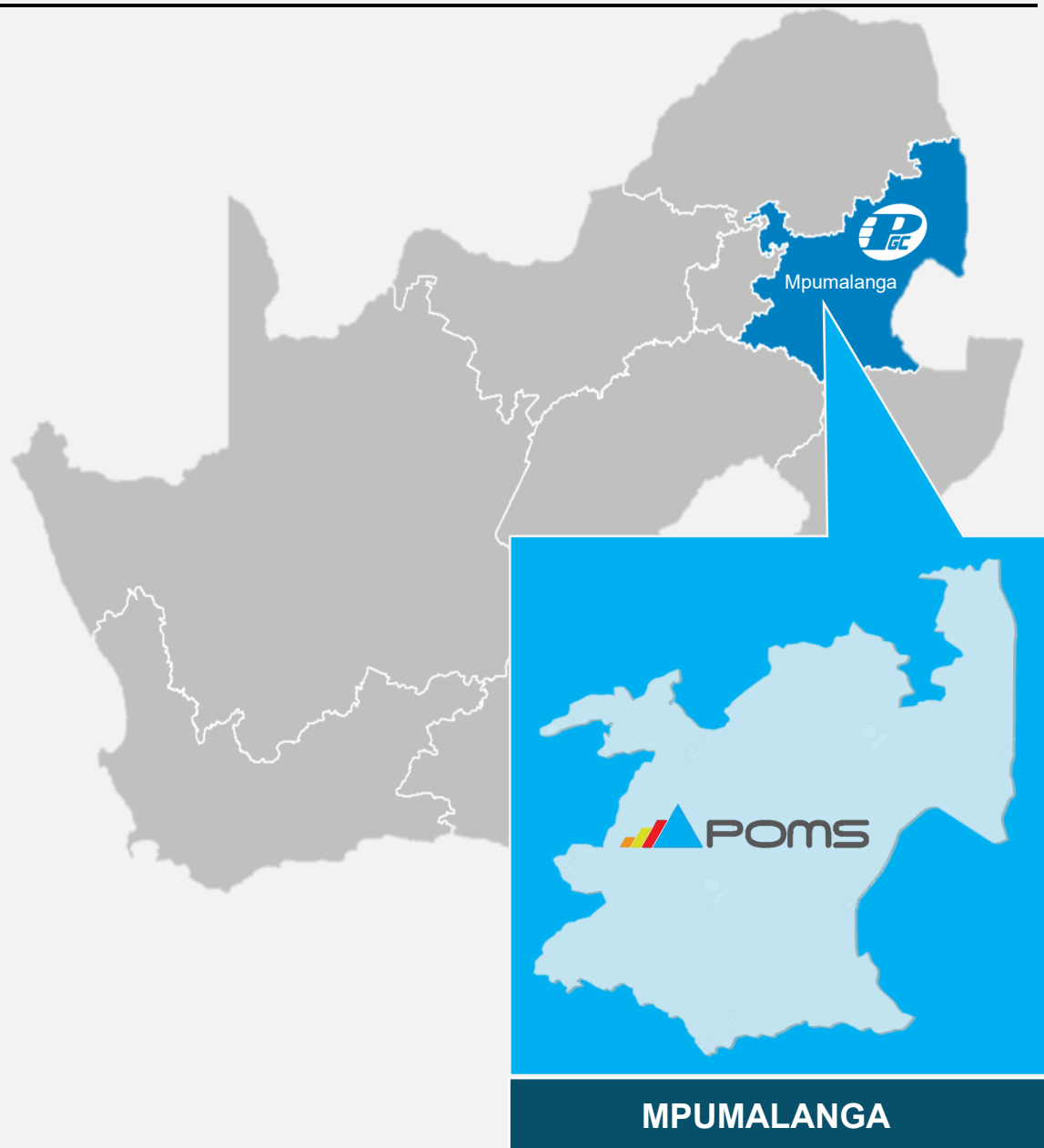
- We act with honesty, consistency, transparency and truth in all that we do. We encourage our people to speak openly and honestly and take ownership of their actions. We pride ourselves in doing what we say we will do.



EMPOWERMENT

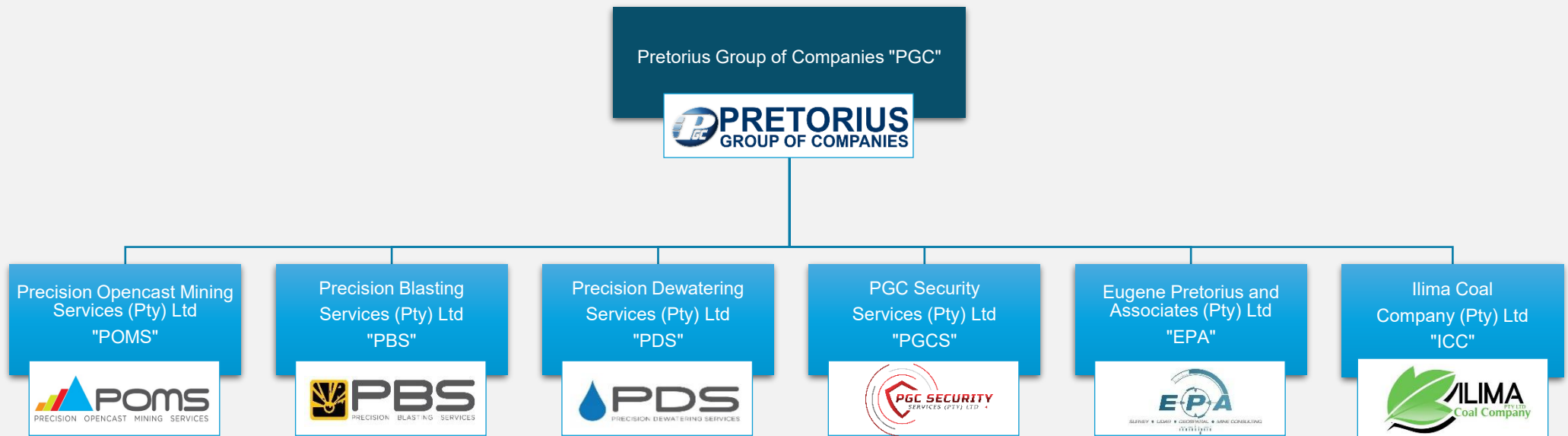
- We recognise that our people are our most important asset. We endeavour to create an environment where personal development and growth are always supported. We acknowledge that the progression and success of the business is directly related to how we encourage and enable the development of our people.

OUR Footprint



Current Projects		Completed Projects		POMS	
Projects		Commodity	Year		
	Umcebo Mining	Coal	2009		
BA Wessels (Pty) Ltd	Zevenfontein	Coal	2012		
	Optimum Coal	Coal	2012		
	Pembani Coal Carolina	Coal	2012		
	Hlagisa Mining	Coal	2012		
	Msobo Coal	Coal	2016		
	Ilima Coal Company	Coal	2017		
GLENCORE	Zonnebloem Colliery	Coal	2017		
	Northern Coal	Coal	2018		
	Kranspan Colliery	Coal	2022		
	Wonderfontein Colliery	Coal	2022		
	Seriti New Largo	Coal	2022		
	Seriti Naudesbank	Coal	2024		
	Wonderfontein Colliery	Coal	2025		

OPERATING Structure



BROAD BASED Black Economic Empowerment

POMS holds a Level 4 BBBEE empowerment rating, with 26% Black (ESOP - Trust). The company's BBBEE policy is aligned with its group policy, which is committed to fair and ethical business practices,

POMS's corporate philosophy is rooted in equality. The company firmly opposes all forms of discrimination and has an employment equity plan which seeks to ensure diversity of its workforce.

Through our annual enterprise development, supplier development, skills development and socio-economic contributions, POMS contributes significantly to the upliftment of historically disadvantaged South Africans. We recognise the importance of sustainable empowerment and are committed to making a constructive difference through our ongoing initiatives.

The company complies with applicable legislation in its procurement policies, demonstrating our commitment to responsible sourcing and transformation objectives whilst ensuring business continuity and sustainability.

POMS is acutely aware of the needs of impoverished communities in South Africa. Within our limited resources, we are committed to supporting and uplifting identified communities, with the aim to make meaningful contribution to sustainable development and improved quality of life.



OUR LEGAL STRUCTURE Capabilities





OUR Equipment

Regular maintenance and timely repairs are strictly implemented to minimize signs of aging and ensure the achievement of our production goals.

INSPECTIONS AND DIAGNOSTICS ON OUR EQUIPMENT

More effective management comes from better information. Our diagnostic services help with preventative maintenance planning, issue identification and analysis as well as determining areas of improvement.

Our maintenance strategy includes close collaboration with original equipment manufacturers (OEMs) to ensure full compliance with their requirements.

We conduct regular reviews of machine KPIs to consistently maintain reliability and meet availability targets.

MECHANICAL AND ELECTRICAL INSPECTIONS ON OUR EQUIPMENT

Our qualified personnel carry out thorough inspections to determine the operating condition of our machines

INTERNAL AND EXTERNAL EQUIPMENT AUDITS

Existing equipment configurations are reviewed to determine potential upgrades and modifications for improved performance

INVENTORY ASSESSMENT

In-depth review of historical maintenance records and current operations to achieve optimal parts inventory

ONLINE CONDITION MONITORING

Continuously monitor the condition of our critical devices and components

TOTAL Equipment

▶	Articulated Dump Trucks (40 ton)	129
▶	Articulated Water Bowser	10
▶	Articulated Services Trucks	9
▶	Excavators	48
▶	Dozers	37
▶	Graders	11
▶	Tractor Loader Backhoe (TLB)	11
▶	Tyre Handler	1
▶	Roller Compactor	3
▶	Ancillary Equipment	71
▶	Light Delivery Vehicles	198





OUR Services



Opencast Mining Services

Drilling and Blasting Services



Dewatering Services

Survey and Geology Services



Security Services

OPENCAST MINING Services

CAPABILITIES

Renowned for excellence, quality and reliability, Precision Opencast Mining offers best practice and innovative solutions to the mining industry, drawn from hard-won specialist knowledge. The company operates a large fleet of machinery and when required, it is able to complement its existing fleet to meet the specific requirements of any project.

PRECISION OPENCAST MINING SERVICES SPECIALISES IN:

- ❑ Contract mining services including mine development
- ❑ Opencast mine planning and costing
- ❑ Drilling & blasting
- ❑ Loading and hauling
- ❑ Opencast rehabilitation
- ❑ Overburden removal
- ❑ Infrastructure [Dams, roads, etc]
- ❑ Project Management



DRILL AND BLAST Services

CAPABILITIES

Renowned for excellence, quality and reliability, Precision Blasting Services offers best practice and innovative solutions to the mining industry, drawn from hard-won specialist knowledge.

PRECISION BLASTING SERVICES SPECIALISES IN:

- ☐ Crack surveys
- ☐ Blast planning and costing
- ☐ Blast designs
- ☐ Blast monitoring
- ☐ Owner operator of explosives magazines



DEWATERING Services

CAPABILITIES

Renowned for excellence, quality and reliability, Precision Dewatering Services offers best practice and innovative solutions to the mining industry, drawn from hard-won specialist knowledge. The company operates a large fleet of in pit mining support machinery and when required, it is able to complement its existing fleet to meet the specific requirements of any project.

Precision Dewatering Services (Pty) Ltd primary function is to provide dewatering related services and products to the opencast coal sector. Precision Dewatering Services specialises in:

OUR SERVICES INCLUDE THE FOLLOWING

- ❑ Pump manufacturing, sales, rentals and repairs
- ❑ HDPE pipe sales, welding and installation and pipe repairs
- ❑ Lay-flat hose sales and installation
- ❑ Lighting tower imports, sales, rentals and repairs
- ❑ Power generator imports, sales and repairs

OUR SECONDARY SERVICES IN CIVILS AND CONSTRUCTION

- ❑ Security fencing sales and installations
- ❑ Electric fencing and all types of barb wire / mesh security fencing
- ❑ HDPE geomembrane dam lining, imports, sales, installation and repairs

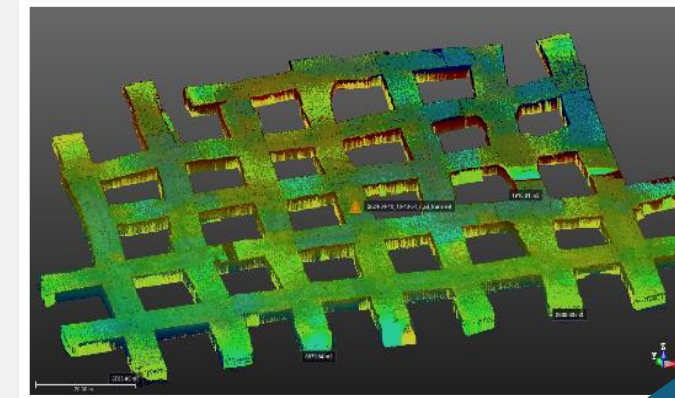
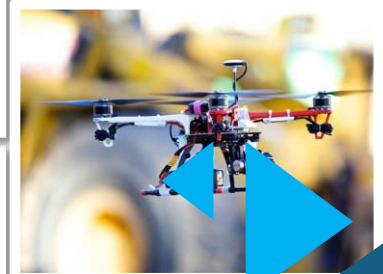
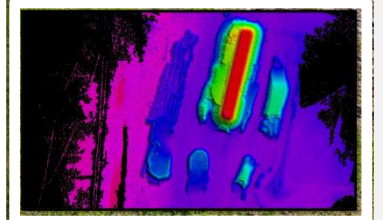
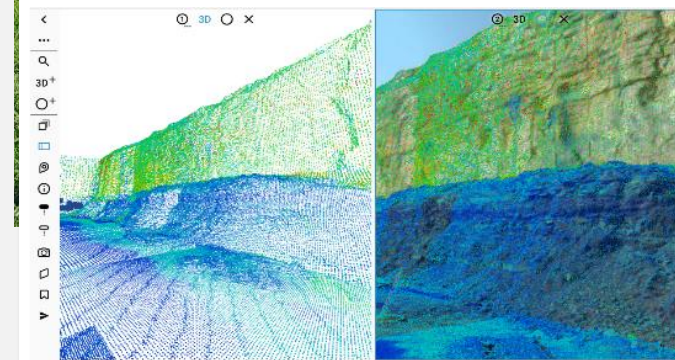


SURVEY AND GEOLOGY Services

MINE AND ENGINEERING SURVEY SERVICES

EPA survey is flexible to offer mine and engineering services that suites the Client's requirements. These survey services range from:

- ❑ Providing a Mine Surveyor on site
- ❑ Pit alignment (i.e. staking out of cut lines)
- ❑ Survey of overburden and pit voids for quantity determination
- ❑ Establishment of reinstatement levels for spoil grade as detailed in the EMPR (Subject to the availability of a Rehabilitation Model)
- ❑ Survey of rehabilitation status plans and submission of these plans
- ❑ Survey of surface features and infrastructure for updating of mine plans
- ❑ Updating mine plans as required in Chapter 17 of Mine Health and Safety Act no 29 of 1996
- ❑ ROM and product stockpile survey
- ❑ Surveying and quantifying material handling quantities
- ❑ Staking out of blast patterns
- ❑ Underground vent and rescue plans
- ❑ Underground alignment
- ❑ Calculation of opencast/underground volumes and reporting
- ❑ Topographical surveys
- ❑ Aerial surveys
- ❑ Setting out of engineering Work
- ❑ Setting out of exploration Boreholes
- ❑ Draughting of plans (i.e. mine plans, general working plans, risk assessment plans and traffic management plans)
- ❑ Geophysical Wireline Services



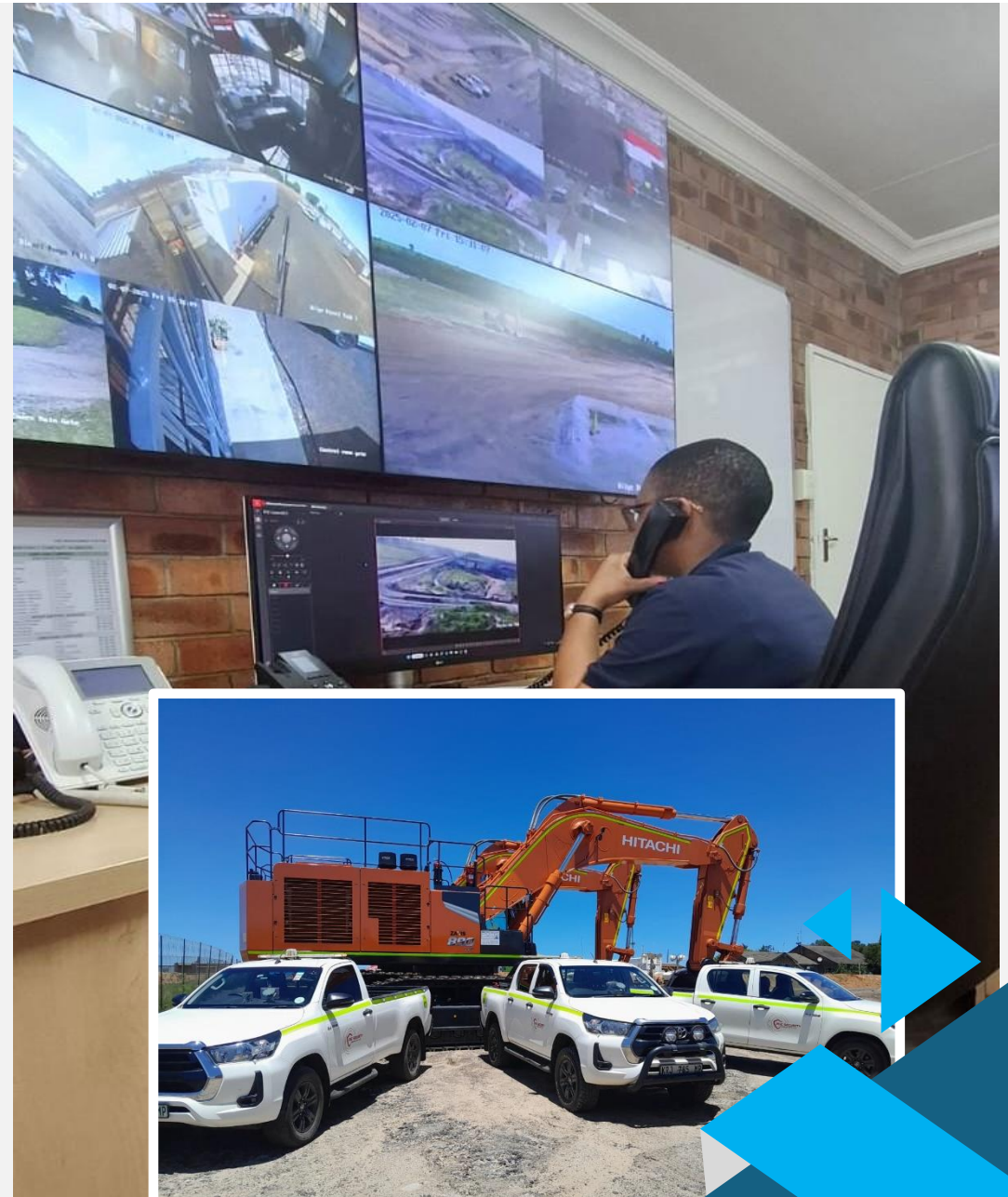
SECURITY Services

CAPABILITIES

Renowned for excellence, quality and reliability, PGC Security offers best security practice and innovative solutions to the mining industry, drawn from hard-won specialist knowledge.

PGC SECURITY SERVICES SPECIALISES IN:

- ☐ Mine perimeter control
- ☐ Access control
- ☐ Security risk management
- ☐ Realtime control room surveillance
- ☐ Reaction units
- ☐ Asset control management
- ☐ Emergency response



HSEQ Management

SAFETY MANAGEMENT

We recognise that the key to a safe workplace is through the development of a safety culture where our people show a genuine desire to protect not only their own safety but also the safety of fellow workers.

- ☐ The safety of our people is a value which is not compromised
- ☐ Safety excellence is recognised as good business
- ☐ Leaders at all levels are safety role models
- ☐ All incidents and accidents can be prevented
- ☐ People are aware of the hazards and risks in their workplace and act accordingly
- ☐ Compliance with Standard Operating Procedures (SOPs) is absolute
- ☐ At risk behaviour is not accepted and will be addressed when observed.
- ☐ Effective skills to lead and work safely are developed through ongoing training and mentoring
- ☐ Where risks are identified, plans will be developed and implemented to manage the risk

OCCUPATIONAL HEALTH MANAGEMENT

- ☐ Health stressors will be continuously identified, evaluated and controlled in all areas across our operations.
- ☐ The workplace will be continuously re-engineered to reduce health stressors.
- ☐ Where this is not possible, appropriate Personal Protective Equipment (PPE) will be provided, maintained and enforced.
- ☐ POMS is committed to prevent injuries and ill health.

ENVIRONMENTAL MANAGEMENT

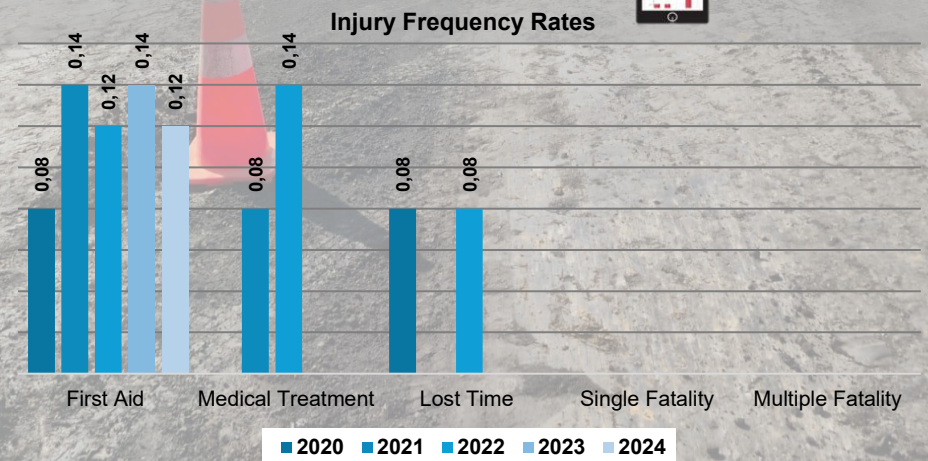
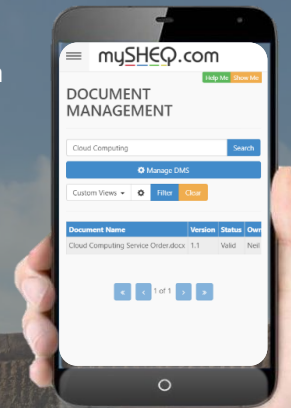
- ☐ Statutory and management control measures will be maintained and optimised to ensure the effective prevention of environmental pollution.
- ☐ People are aware of the environmental risks, and they will act in a manner which best prevents these risks.

RISK MANAGEMENT

- ☐ By understanding and managing risk, we can provide greater certainty for our stakeholders, employees, customers, suppliers and the communities in which we operate.
- ☐ Throughout POMS, we will adopt a structured and consistent approach to risk management, aligning strategy, processes, people, technology and knowledge for the purpose of evaluating and managing the uncertainties we face in creating shareholder value.
- ☐ The aim is for risk management to become embedded into all critical business systems and processes to ensure risks associated with changes or investments are systematically identified and managed on a common and holistic basis.
- ☐ The level of risk control will be balanced by our continued encouragement of enterprise and innovation, with good business governance being assured through the regular measurement and reporting of our risk management performance.
- ☐ These assurance processes will focus on improving our ability to manage risk effectively so that we can quickly and confidently act on opportunities to gain competitive advantage, create value and achieve real growth.

POMS MANAGES A REAL-TIME, WEB-BASED HEALTH AND SAFETY COMPLIANCE MONITORING SYSTEM.

- ☐ Document and record control system
- ☐ Non conformance reporting system
- ☐ Incident and accident investigation system
- ☐ PPE issuing, inspection and monitoring system
- ☐ Internal audit system
- ☐ Action manager system
- ☐ Scheduled actions system
- ☐ Manhour system
- ☐ Plant and equipment maintenance system
- ☐ Planned task observations system
- ☐ Inspections and actions system
- ☐ Risk management system
- ☐ Training and compliance monitoring system
- ☐ Meetings management system
- ☐ Management of change system
- ☐ Business intelligence dashboard
- ☐ Near miss system
- ☐ Contractor management
- ☐ Real time reports and dashboards
- ☐ Work permit
- ☐ Energy isolation authorisation module



OUR HSEQ Commitments



PRECISION OPENCAST MINING SERVICES

Revision 005 – 16 March 2022

HEALTH AND SAFETY POLICY

Precision Opencast Mining Services (Pty) Ltd intends to ensure that our operations are conducted in a manner that will achieve excellence in all business activities impacting on Safety, Health, Environment, Risk and Quality management. The SHE Policy will be communicated to all employees of the Company to ensure it is clearly understood.

Safety commitment

We recognise that the key to a safe workplace is through the development of a safety culture where our people show a genuine desire to protect not only their own safety but also the safety of fellow workers. The SHE Management system has been documented and implemented and shall be maintained.

Our commitment towards compliances is as follows -

- ☐ the safety of our people is a value which is not compromised;
- ☐ all incidents and accidents can be prevented;
- ☐ we are aware of the hazards and risks in the workplace and act accordingly;
- ☐ we understand that we are responsible for our own safety and the safety of others;
- ☐ compliance with standard operating procedures (SOPs) is absolute;
- ☐ at risk behaviour is not accepted and will be addressed when observed;
- ☐ effective skills to lead and work safely are developed through ongoing training and mentoring;
- ☐ where risks are identified, plans will be developed and implemented to manage the risks;
- ☐ the Company complies with all the applicable legal and other requirements.

Health and hygiene commitment

- ☐ health stressors will be continuously identified, evaluated and controlled in all areas across the Company;
- ☐ where this is not possible, appropriate personal protective equipment (PPE) will be provided, maintained and enforced;
- ☐ we are committed to prevent injuries and ill health.

Environmental compliance commitment

- ☐ statutory and management control measures will be maintained and optimised to ensure the effective prevention of environmental pollution;
- ☐ we are aware of the environmental risks, and we will act in a manner which best prevents these risks.

Risk management commitment

- ☐ hazards will be identified, risks will be assessed, and risk control measures will be implemented, monitored and controlled before any work is to commence;
- ☐ effective skills to work safely are developed through ongoing hazard identification and risk assessment training and mentoring.



Mr Allan Bullock
Chief Executive Officer

Date16/03/2022



PRECISION OPENCAST MINING SERVICES

Revision 004 – 16 March 2022

ENVIRONMENTAL POLICY

Obligations

We recognise that our business has an important role to play in protecting and enhancing the environment for future generations and to help improving the long-term sustainability of the opencast mining industry. To this end Precision Opencast Mining Services (Pty) Ltd are committed to taking the following action.

- ☐ to achieve sound environmental practices across our entire operation [best environmental practice]
- ☐ to produce an annual environmental plan setting out our objectives, targets, and planned actions
- ☐ to comply fully with all relevant legislations through effective engagement with competent authorities
- ☐ to minimise our waste generation and reduce our water consumption where possible
- ☐ to reduce, reuse, recycle the resources consumed by our business wherever practical
- ☐ to invite our customers, suppliers, and contractors to participate in our efforts to protect the environment
- ☐ to provide all employees with the training and resources required to meet our objectives
- ☐ to openly communicate our policies and practices to our stakeholders and interested and affected parties
- ☐ to monitor and record our environmental impacts on a regular basis and compare our performance with our policies, objectives, and targets
- ☐ to comply with all national environmental legislations as well as relevant international standards and policies on climate change.

This policy will be communicated to all employees of the Company to ensure it is clearly understood.

Application of this policy

We seek the co-operation of all workers, customers, and other persons and we encourage suggestions for realising our environmental objectives to create an environmentally sound working environment.

This policy applies to all business operations and functions, including those situations where workers are required to work off-site.



Mr Allan Bullock
Chief Executive Officer

Date16/03/2022



PRECISION OPENCAST MINING SERVICES

Revision 002 – 16 March 2022

QUALITY POLICY

Obligations

Precision Opencast Mining Services (Pty) Ltd believes that its market expects a continually improving service. We aim to continually improve the service we provide to meet our client's requirements and to produce finished work that we can justifiably be proud of. The company aims to achieve the above by implementing a management system that complies with the international standard of good practice SANS ISO 9001:2015. It also includes a commitment to meet the requirements of our clients, as well as legal and other requirements. Also, to continual development of the system and helping to ensure it remains effective.

The management of POMS have defined and documented the following commitment with respect to quality. Every staff member has the responsibility to ensure that the intentions of this policy statement are understood, applied, and maintained within their own activity area.

POMS have made a commitment:

- ☐ To use the disciplines of SANS ISO 9001:2015 to develop and maintain the processes needed to produce a level of product and service of a consistent standard of quality and at competitive cost
- ☐ To foster good relationships with clients by effective communications with clients and encouraging feedback
- ☐ To continually improve the effectiveness of the Integrated Management System
- ☐ To document and measure quality objectives and targets through internal audit and management review
- ☐ To deliver opencast mining services in accordance with the specifications and requirements of our clients
- ☐ That every employee constantly aims to improve the overall quality of Company products and services

By adopting this philosophy, the clients of POMS will be assured of an excellent standard of completed projects and services in accordance with specifications and contracts. Management has the ultimate responsibility to maintain the quality policy and shall promote all initiatives to attain and improve quality to:

- ☐ give all personnel adequate information and training to enable all tasks to be undertaken with a consistent standard of quality
- ☐ ensure that excellent relations between the Company and employees are maintained.

Application of this policy

This policy applies to all business operations and functions, including those situations where workers are required to work off-site. This policy will be communicated to all employees of the Company to ensure it is clearly understood.



Mr Allan Bullock
Chief Executive Officer

Date16/03/2022

TRAINING Management

Each operation is supported by a fully equipped Training Centre, offering both refresher and accredited training programs for our employees and local community members.

The following accredited machine operator training courses are provided by POMS













- ☐ Articulated Dump Truck
- ☐ Track Dozer
- ☐ Track Excavator
- ☐ Motor Grader
- ☐ TLB
- ☐ Water Bowser
- ☐ Diesel Bowser
- ☐ Service Truck
- ☐ Forklift
- ☐ Truck Mounted Crane
- ☐ Front End Loader
- ☐ Skid Steer Loader
- ☐ Drill Rig
- ☐ Exploration Drill

The following additional accredited training programs are provided by POMS

- ☐ Full qualifications
- ☐ Skills programs
- ☐ Health and safety training programs
- ☐ Operator skills programs
- ☐ Machine equipment training
- ☐ Simulator training



Pretorius Group of Companies

		Precision Opencast Mining Services (Pty) Ltd "POMS"		
		EDC Blasting (Pty) Ltd trading as Precision Blasting Services (Pty) Ltd "PBS"		
		Precision Dewatering Services (Pty) Ltd "PDS"		
		Eugene Pretorius and Associates (Pty) Ltd "EPA"		
		PGC Security Services (Pty) Ltd "PGCS"		
	Middelburg Offices 32 Liter Street Industrial Middelburg Mpumalanga South Africa 1055		Head Office (Pretoria) Block C, 2nd Floor, Menlyn Corporate Park Cnr Corobay and Garsfontein Road Waterkloof Glen Pretoria South Africa 0181	
	www.prestoriusgroup.co.za			
	+27 13 246 1525			
	info@pretoriusgroup.co.za			

